

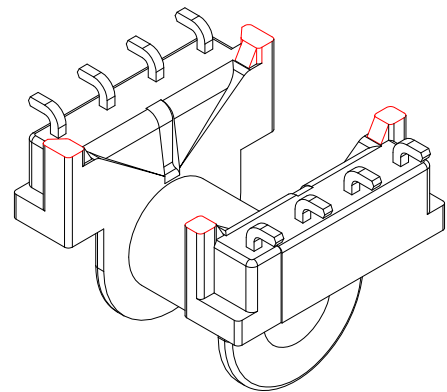
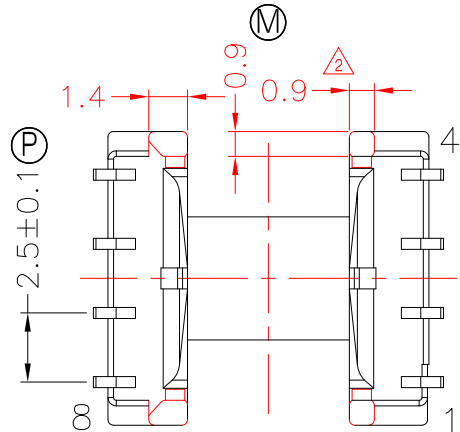
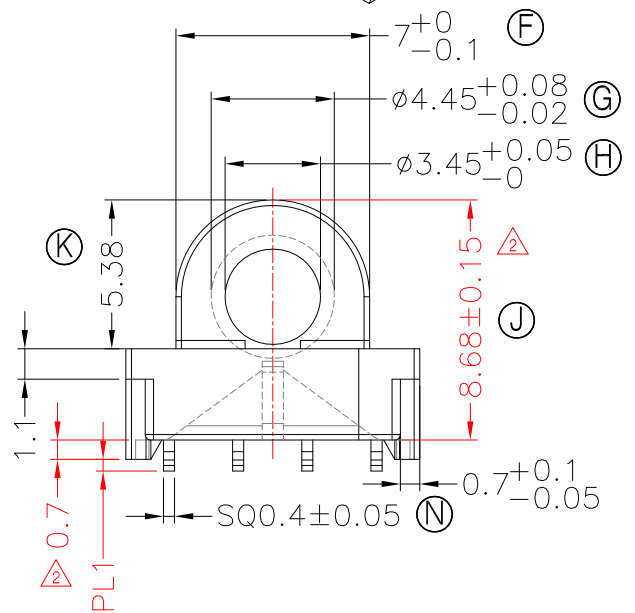
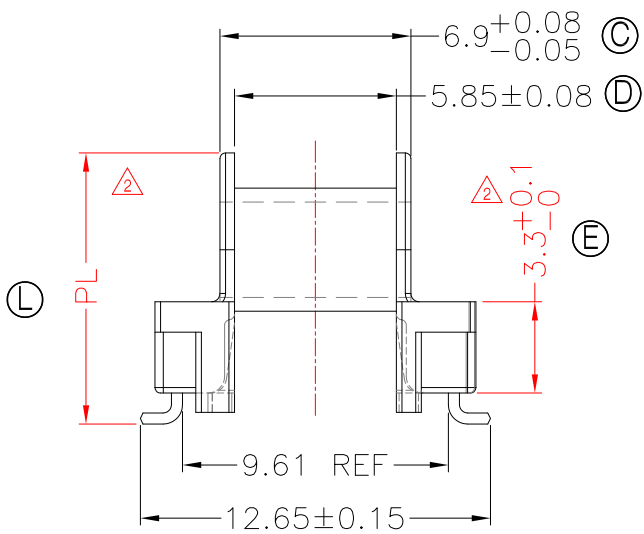
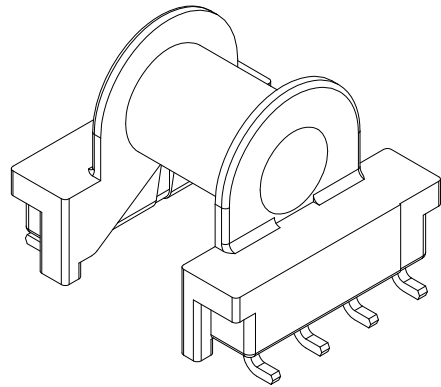
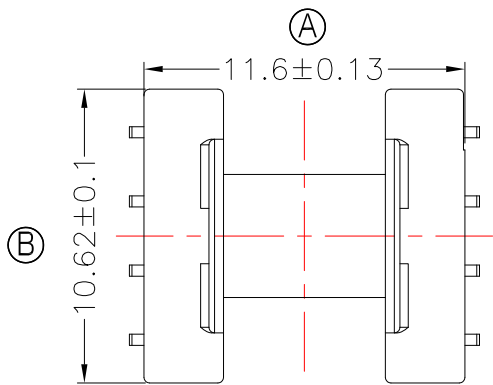


TRANSFORMER BOBBIN
INDUSTRIAL CO.,LTD.

Tel : 86-769-88789999 Fax : 86-769-88789989
http:// tbi-tw.com e-mail : tb6688@ms46.hinet.net

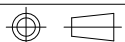
REVISIONS

REV	SYM	DRAFTER	CHECKER	DATE
1		G.F.YANG	W.H.HSU	06/01/15
2		G.F.YANG	W.H.HSU	09/18/15
3				



DWG NO. EP7L-8P-L-2.5V-G5-11

PART NO.	MATERIAL (BOBBIN)	MATERIAL (TERMINAL)	TERMINAL (PLATING)	PIN ALLOCATION			
TBI-103-08751.1103	PM-9630	PB	Sn	ALL PIN	PL=9.8 ^{+0.00} / _{-0.25}	PL1=0.42±0.2	S,C
TBI-103-08751.1113	PM-9630	PB	Sn	ALL PIN	PL=10.2±0.2	PL1=0.82±0.2	H



TOLERANCE: 0<L<=4:±0.1 4<L<=16:±0.2 16<L<=63:±0.3

UNIT : m / m

SCALE 1 : 1

Finish: 1. PB wire Immersion Sn on terminal : Thickness:Sn plating,100%,5 μm (200 μ inches) min,Base nickel 1-2.5 μm (40-100 μ inches) min.
2. CP wire Immersion Sn on terminal : Thickness:Sn plating,100%,5 μm (200 μ inches) min.
3. Coplanarity deviation: 0.10 mm (0.004 inches) max.
4.Pin pull strenght = 1.0 kg (min) .

REV 2